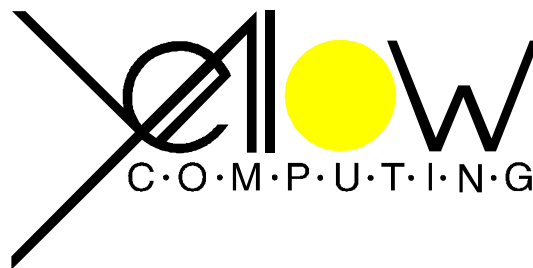

Memory Manager

for **Nokia 9110**



Copyright © 2000 by

Yellow Computing Computersysteme GmbH

Hanns-Martin-Schleyer-Strasse 1

D-74177 Bad Friedrichshall (Germany)

Internet: <http://www.yellow.de>

List of contents

Introduction	3
Installation	4
What does the program at all?	5
First Steps	5
Main Screen	6
Move	7
The Key [Apply]	7
The Key [Statistics]	8
To prepare the Nokia for memory card removal	8
Transferring files with PC	9
About	9

1 Introduction

With these instructions we want to help you find your way round **Memory manager** as quickly and easily as possible. We will start by describing the installation and start-up of **Memory manager**. This is followed by an example, to illustrate the various functions and options of the program. Finally, you will find lists of commands and keyboard shortcuts as well as ways of exporting information obtained from **Memory manager**.

1.1 *The Nokia 9110 Communicator*

This User Manual is specially made for users of the Nokia 9110 Communicator.

Throughout this user manual, "Nokia" is used instead of the complete name "Nokia 9110 Communicator".

1.2 *List of used keys on the Nokia*

[←] [Ⓜ] [→] [Ⓜ] The cursor keys

[Enter] The enter key

[Tab] The tabulator key (left of [Q])

[Shift] The shift key

Close One of the four command keys right beside the display

2 Installation

2.1 Installation on the Nokia 9110 Communicator

For the installation of **Memory Manager** you need the program "PC Suite for Nokia 9110 Communicator" on your Windows PC. The program PC Suite is contained on the CD-ROM, which comes with the purchase of a Nokia 9110 in the package and is not a part of our **Memory Manager**. We assume that you've already operated with PC Suite and that you've configured your Nokia Communicator with PC Suite to have a communication via cable or infrared. If you did not operate ever with PC Suite, then is hereby most recommended to you to read the operating instruction of PC Suite. To install the software follow these steps:

- start your PC Suite on your PC to make a connection to your Nokia Communicator
- click in the symbol border of PC Suite on the symbol install/remove. PC Suite changes a clicking you into the mode for software installation
- press in the line "path selects" on button searching. Determine now the drive, from which you would like to install Memory Manager. For Example "A: \" if the Floppy is in drive A. The list of installable applications appears.
- select from the list **Memory Manager utility program**
- it is mandatory that you install **Memory Manager** on the memory card of your Nokia communicator. Mark for this the option "memory card" in the field installation place
- with one click on the button installing, the process will be starts. Please wait for up to the successful end of the installation and make neither on your PC nor on your Nokia Communicator any runs.

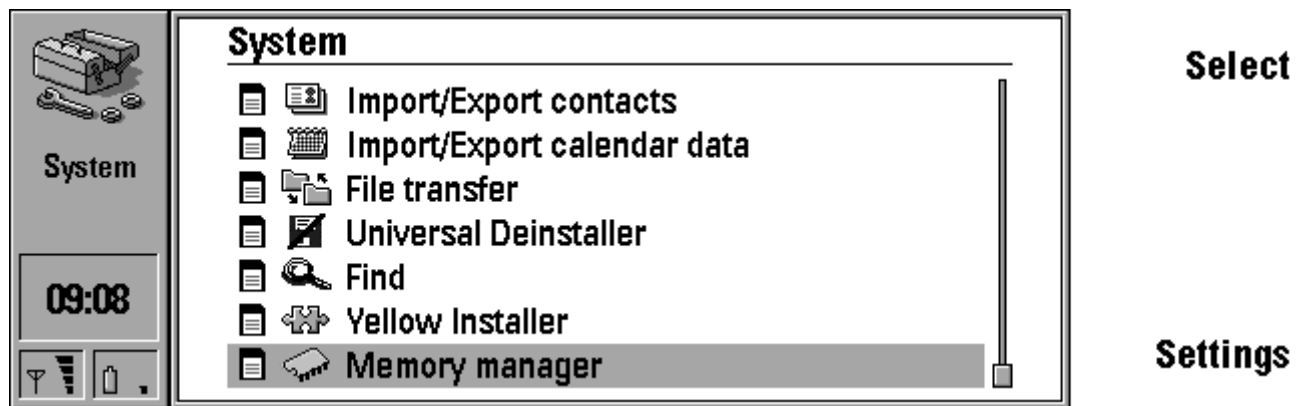
If you are using Mac computer, use **Mac Suite** (available on www.forum.nokia.com site) or Nserver for Mac respectively.

Memory manager is usable, only when valid memory card is present in the Communicator.

3 What does the program at all?

The data belonging to each of the Nokia applications (e.g. calendar, contacts, SMS, E-Mail etc..) are normally stored in the internal memory of the device. **Memory manager** allows you now to store now this data directly on the memory card of your Nokia Communicator. This will free up the internal memory and make your Nokia device faster and more reliable. In a simple manner you can determine for each type of the application data, where these are to be stored.

4 First steps



Pressing blue System key and selecting Memory manager entry can start the application.

After application starts, a screen will be shown. This screen is called main screen. It displays to a user current memory settings. Please use the following cursor [] to choose “**Memory manager**”. All application functions are accessible from this screen.

Now you have the main display on the screen. This shows the current memory adjustments of the user.

From this display you have access to all functions of the program, so that no long looking up is necessary.

You can now determine, where new data are stored, and whether available data are to be moved on the memory card. So it is e.g. also possible the existing data to move on your memory card and new data can be stored further in the internal memory. An exception forms here only the calendars database. Calendars consists in each case of a file, this can be stored also only at a place.

You can be able to be displayed also a statistics to see over like how much storage space occupied their data on the card and in your internal memory.

5 Main Screen

Memory manager allows locating the data files of several standard applications either on internal memory or on memory card.

Memory manager			Change
	Location	Move	
Calendar database:	Internal		Apply
Documents			
Own texts:	Internal	▶ No	Statistics
Received faxes:	Internal	▶ No	Close
Received messages:	Internal	▶ No	
Received mail:	Internal	▶ No	
Downloaded files:	Internal	▶ No	

Memory manager			Change
	Location	Move	
Received faxes:	Internal	▶ No	Apply
Received messages:	Internal	▶ No	
Received mail:	Internal	▶ No	Statistics
Downloaded files:	Internal	▶ No	
Tones:	Internal	▶ No	
Internet			
Internet files:	Internal	▶ No	Close

The **Location** and **Move** lists are shown for each moveable directory.

An exception is calendar database, which is a single file. So the location list is enough to determine the file placement.

Location list determines where the new files of the corresponding directory will be created.

Move list determines, if all files in the directory will stay at given location.

When **Internal** location is set, files can stay on both locations (e.g. internal memory and card).

When **Card** location is set, all files must be placed on memory card and **Move** list is disabled.

When the Memory manager application is started, the current state of all directories is listed.

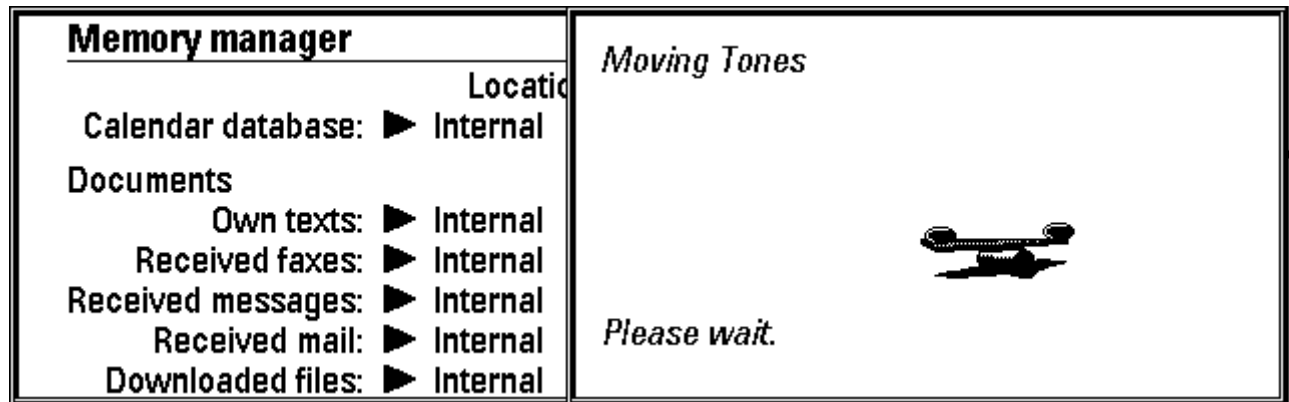
Press **Change** button to change selection of marked list.

6 Moving your data

Under **Move** you can determine whether data from the internal memory to the card is to be shifted. Select with the keys [**↑**] [**↓**] the desired entry. With **Change** key, or with [**Enter**] you can change then between **Yes** and **No**. If here adjusted **Yes**, all data of the type concerned at a place are always stored. Available data are shifted to the selected **Location**.

With **No** the old data remain where they are. The new are stored to the selected **Location**. If as **Location card** is selected, **all** data of this type on the card must be stored. The selection **Move** is then not available, since it must be on **Yes**. With the Calendar is no selection for shifts possible! (see to point 4 first steps).

7 The Key [Apply]



To make any changes effective, press **Apply** button.

Before a directory will be relocated, the application checks, if none of files placed in the directory is used and whether there is enough free space on the destination or not.

If a file is used by another application, the relocation is stopped and name of used file is displayed. This makes it easier to find the application, which uses the file.

It can happen, that files with identical name exist in internal memory and on the memory card. In such case a warning dialog will be displayed. It is possible to delete or rename these files with identical names, otherwise relocation would be impossible. Note: Renaming is possible only for document files.

8 The Key [Statistics]

Memory statistics					
	Internal		Card		
	Size	Count	Size	Count	
Calendar database	8 kB	2			
Own texts	38 kB	30	1 kB	1	
Received faxes	0 kB	0			
Received messages	25 kB	25			
Received mail	26 kB	5			
Downloaded files	257 kB	6	9 kB	8	
Tones	1 kB	1	7064 kB	4	

Close

This screen shows number of files and their size in all locations changeable by this application.

If a directory does not exist, nothing is shown. Otherwise files count and files size is displayed for each memory.

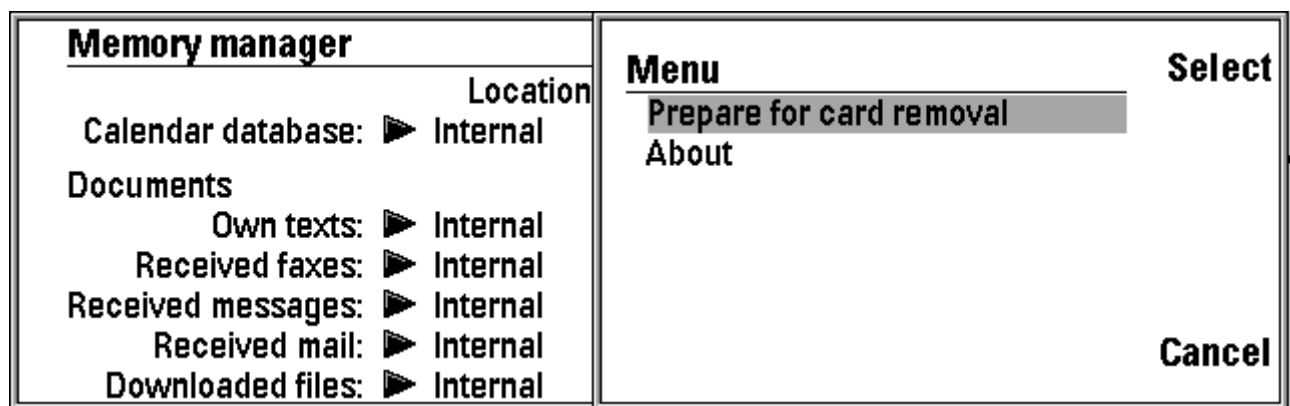
Press **Close** to get back to **Main screen**.

9 Closing the application

To close the application, press the **Close** button in the main screen.

Please note, that any changes in the location you have made will become valid only if you have pressed the **Apply** button before you terminate the **Memory manager** application.

10 To prepare the Nokia for memory card removal



If you to take out the memory card from your 9110 the stored data are not longer available for your Nokia. Additionally the **Memory manager** program must be informed about the fact that the memory card is taken. Proceed as follows, if you want to take the memory card out of your Nokia:

Press in the main screen the **menu key** (left quite above) and select you from the following screen the option **Prepare for card removal**. Acknowledge this with the key **Select** or **[Enter]**.

Thus become the adjustments for all file types on **Location: Internal** and **Move: No** adjusted, and those according to data again into the internal memory back. Existed in the internal memory not enough free storage space, so you'll get an error message. Then the memory card cannot be taken.

10 Transferring files with PC

Due to some technical limitations, the NOKIA PC Suite software does not see document files and directories, when they are located on memory card.

PC Suite synchronisation of calendar and to-do events is possible regardless of calendar database location, but a backup of the calendar database is only possible, if the database resides in internal memory.

To make the files accessible for PC Suite, locate corresponding directory to **Internal** memory with **Move** list set to **Yes**.

If you don't want to move files back to internal memory or if there is not enough free space to do that, the Nokia **File transfer** application together with Nokia **NServer** application can be used (both are delivered on the CD contained in Communicator package).

With these two applications you are able to transfer all files to and from a PC regardless of their location.

11 About

Copyright © 2000 by Yellow Computing Computersysteme GmbH

Please note that the program and this manual are under copyright. No part of this program or manual may be reproduced, changed, translated into other languages or stored in a retrieval system in any form or by any means without prior consent from Yellow Computing.

Despite our extensive checking procedure we do not accept liability for any errors in the User Manual, in the interface cable, disk or on the CD-ROM that might cause damage to components, machinery or data. The usual legal warranty rules apply to our products.

We reserve the right to make technical changes to the hard and software.

We can give no guarantee that our products will work perfectly on computers and configurations other than the ones specified by ourselves. In particular, this applies to emulators of all kinds.

Names and data used in the examples are purely fictitious.

Product names in the user manual and in this Help system, which are registered trademarks, are not marked as such. The fact that a product is not marked ® does not imply that its name is free. Nor does it give any indication as to whether the said product is under a patent or utility-model patent.

Copyright © 2000 by
Yellow Computing Computersysteme GmbH
Hanns-Martin-Schleyer-Strasse 1
D-74177 Bad Friedrichshall (Germany)

Visit <http://www.yellow.de> for more information.